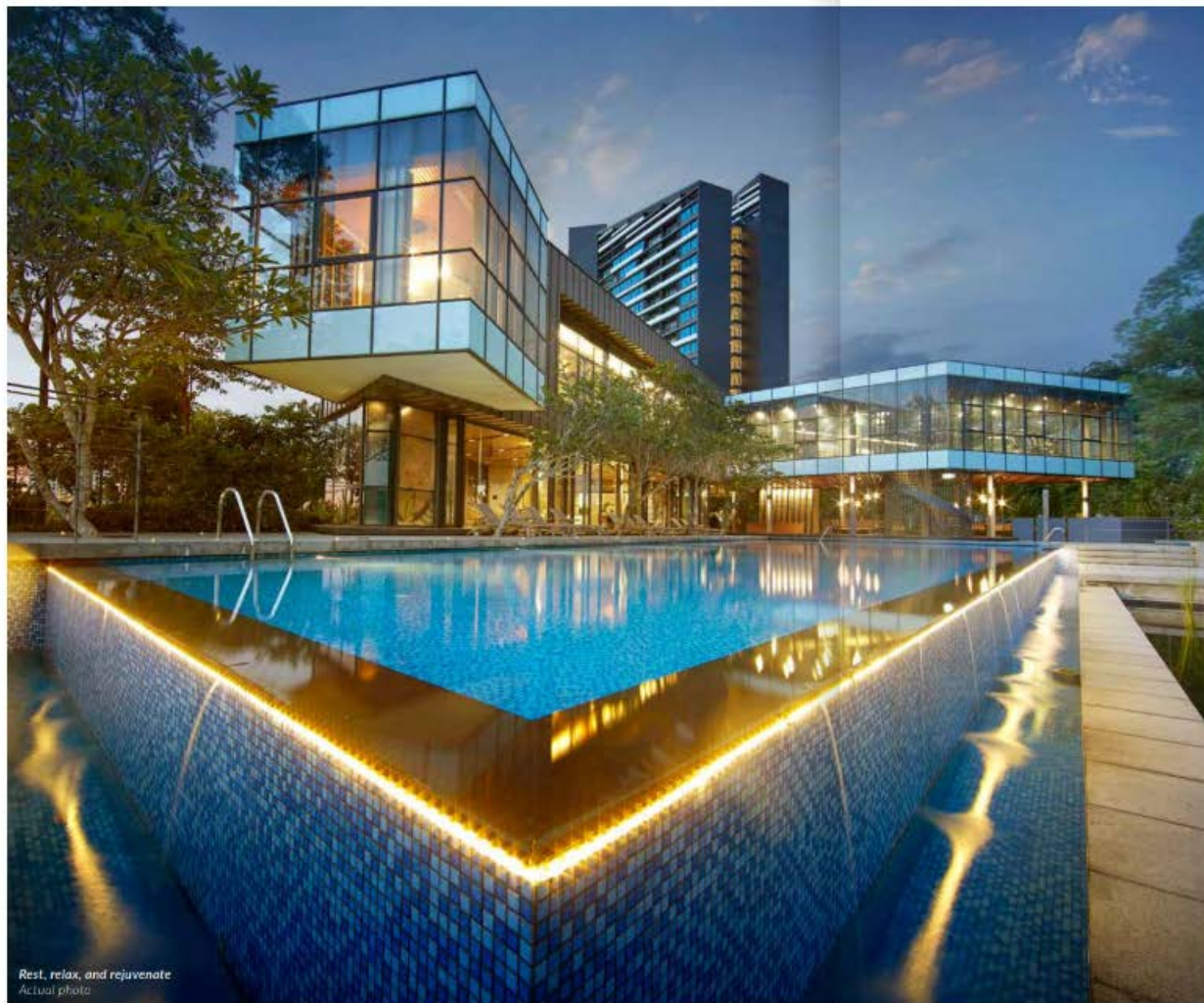




AMIDST RUSTLING LEAVES & TRICKLING WATER

The cool, gentle breeze caresses your day as it combs through the trees on these tree-lined roads. Let it guide you to your sanctuary - your home.





Rest, relax, and rejuvenate
Actual photo

SIGNATURE CLUBHOUSE WITH RESORT AMENITIES

The private clubhouse grants exclusive access solely to residents, ensuring privileged and intimate experience.

Indulge in a plethora of amenities, featuring a gymnasium, sauna, tennis court, library, and private function spaces, for you to relish each experience to your heart's content.



A water oasis
Actual Photo

WHERE THE AIR IS COOLER

Stroll through the parks that make the mornings dazzle and afternoons cool. The inviting play areas beneath the canopies invite you to an adventure of discovery, both during the day and night.



NATURE AT ITS BEST

Within nature's embrace, where family bands flourish. Discover a haven of serenity for your loved ones.



AN OASIS OF TIMELESS ELEGANCE

Enveloped in the elegance of Senja, where streams shimmer brilliantly in the soft sunlight, adorning the verdant wonderland. This is a place unparalleled in its beauty and grace.





LIGHT-FILLED SPACES

Rediscover the inherent beauty of nature in every corner of your home. Embrace its radiant glow, and enjoy the play of sunlight and gentle breeze. A natural harmony from within. This is living with joy, redefined.



ORGANICALLY TACTILE HOMES

In every home, you'll discover meticulous craftsmanship and creative use of materials, each one inspired by nature. These touches bring a comforting sense of soothing familiarity.





Artist's impression


CATERING TO THE FINER LIFESTYLES

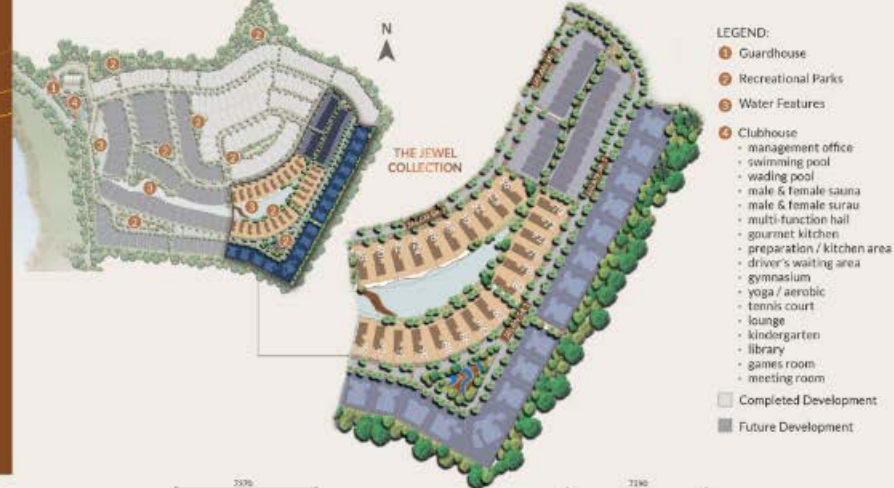
Complemented by nature-inspired elements in its architecture, discover exquisite finishes and calming views. This is your lifestyle under the treetops. An esteemed retreat, accessible to a privileged few.



3-Storey Zero-Lot Bungalow
Artist's impression

3-Storey Zero-Lot Bungalow

45' x 98' | 4,924 sq. ft. | 5+1 |  



Hatched wall is mostly a guideline to signify a proposed location of a feature.

3-Storey Semi-D

39' x 97' | 4,299 sq.ft. - 6,743 sq.ft. | 5+1 | 6



- Gated and Guarded Community
- Signature Clubhouse Privileges
- Garden Facing Units
- Ample Parking Spaces Up To 6 Cars
- EV Charging Provision
- Flexible Layouts
- Disabled-Friendly Bathroom
- Dedicated Laundry Room
- En-Suite Bathrooms



Hatched wall is merely a guideline to signify a proposed location of a feature.

Active
Go to Se

3-Storey Superlink

26' x 92' | 3,398 sq.ft. - 3,473 sq.ft. | 4+1 | 5



- 1 Guardhouse
 - 2 Recreational Parks
 - 3 Water Features
 - 4 Clubhouse:
 - management office
 - swimming pool
 - wading pool
 - male & female sauna
 - male & female surau
 - multi-function hall
 - gourmet kitchen
 - preparation / kitchen area
 - driver's waiting area
 - gymnasium
 - yoga / aerobic
 - tennis court
 - lounge
 - kindergarden
 - library
 - games room
 - meeting room
- Completed Development
 Future Development



Gated and Guarded Community



Signature Clubhouse Privileges



Back Lane Linear Garden



Ample Parking Spaces Up To 4 Cars



EV Charging Provision



Flexible Layouts



Double Volume Ceiling



Disabled-Friendly Bathroom



En-Suite Bathrooms



Active
Go to S